

**POWERSTROKE**  
**Pressure Washer**  
**Manufacturing Nos. 090079429 and 090079436**  
**Item Nos. PS803188 and PS8C3152**  
**Replacement Parts List**

**OWT INDUSTRIES, INC.**

P.O. Box 1427, Anderson, SC 29622 USA  
1-877-617-3501 • [www.powerstroketools.com](http://www.powerstroketools.com)

POWERSTROKE PRESSURE WASHER – ITEM NO. PS803188 AND PS8C3152

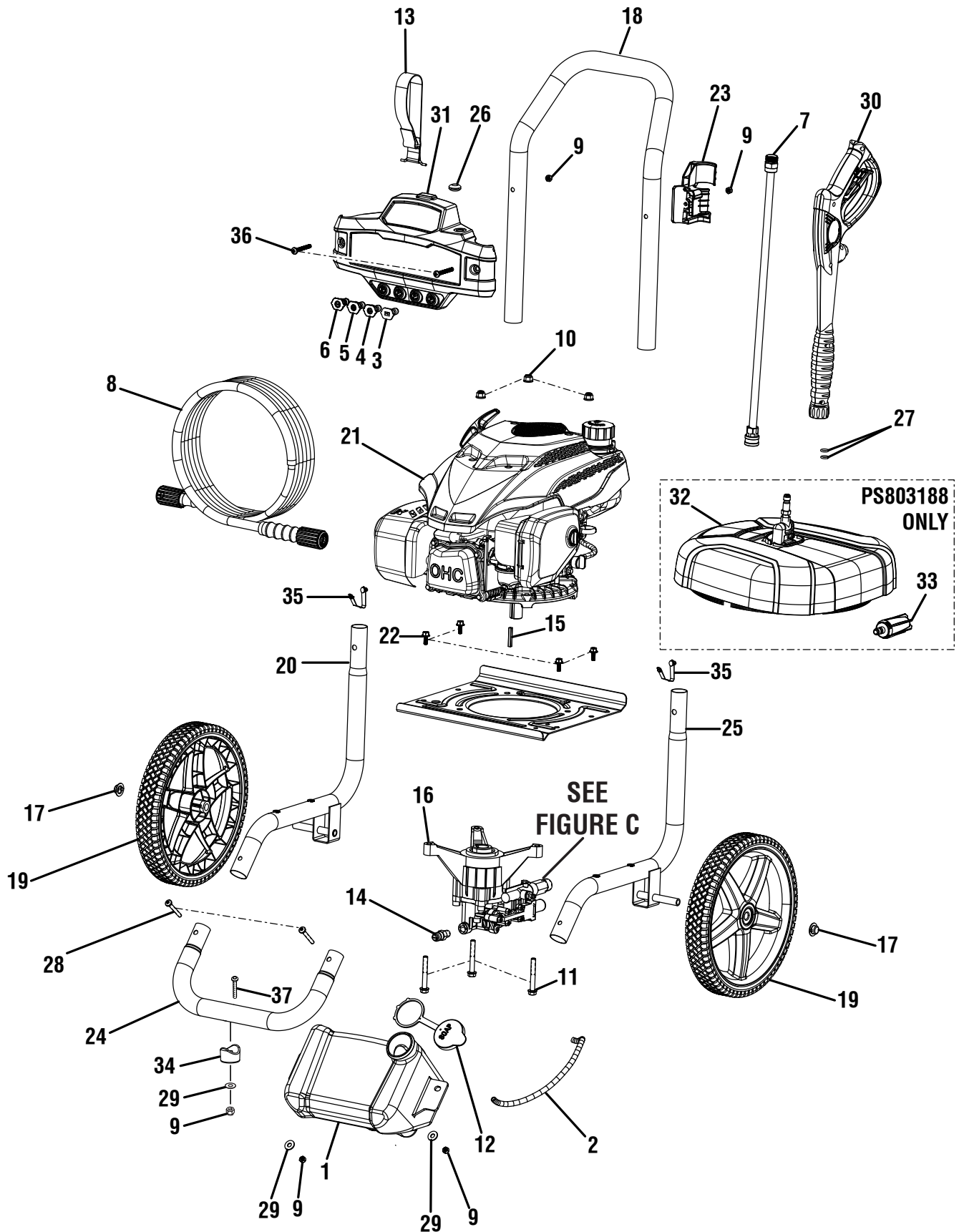


FIGURE A

FOR UNIT LABELS,  
SEE FIGURE C

## POWERSTROKE PRESSURE WASHER – ITEM NO. PS803188 AND PS8C3152

The model number will be found on a label attached to the engine. Always mention the model number in all correspondence regarding your **PRESSURE WASHER** or when ordering replacement parts.

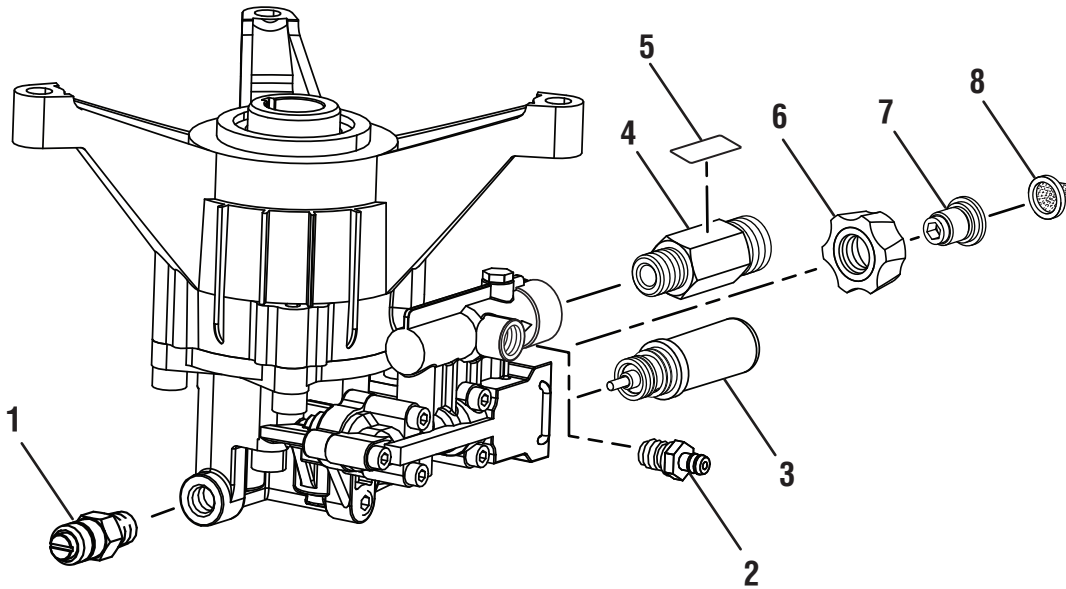
### FIGURE A PARTS LIST

KEY NO.	PART NUMBER	DESCRIPTION	QTY
1	580875021	Soap Tank.....	1
2	570728009	Chemical Siphon Tube .....	1
3	308706013	Soap Nozzle .....	1
4	308700012	40° Nozzle.....	1
5	308699012	25° Nozzle.....	1
6	308698012	15° Nozzle.....	1
7	308506014	Wand Assembly.....	1
8	308835083	Hose (30 ft.).....	1
9	678610006	Lock Nut (M6).....	5
10	678774002	Flange Nut (M8 x 1.25).....	3
11	660962003	Bolt (M8 x 60 mm, Flange Hex Hd.).....	3
12	310650004	Soap Tank Cap.....	1
13	308350003	Hose Holder Strap.....	1
14	678169004	Thermal Release Valve .....	1
15	678041006	Output Shaft Key.....	1
16	308653078	Pump (See Figure B) .....	1
17	679957001	Wheel Cap.....	2
18	308638080	Handle Assembly .....	1
19	308451067	Wheel .....	2
20	310703034	Main Frame Assembly (Left, Inc. Key No. 35).....	1
21	<b>NOTE A</b>	Engine .....	1
22	661505020	Flange Bolt (M6 x 16 mm) .....	4
23	519313019	Wand Holder .....	1
24	310742034	Front Frame Assembly (Inc. Key Nos. 9, 28-29 & 34) .....	1
25	310704034	Main Frame Assembly (Right, Inc. Key No.35).....	1
26	561383004	Rubber Grommet .....	1
27	570742072	O-Ring (9.5 x 2.65) .....	1
28	661503015	Screw (M6 x 48 mm, T30 Torx Pan Hd.).....	3
29	638128004	Washer (1/4 in.).....	3
30	308760019	Trigger Handle Assembly .....	1
31	518790038	Performance Panel.....	1
32	308999049	14 in. Surface Cleaner (PS803188) .....	1
33	308311030	Turbo Nozzle (PS803188).....	1
34	570554002	Wear Pad .....	1
35	308421004	Spring Clip.....	2
36	661834008	Screw (M6 x 48 mm, Button Head).....	2
	<b>Not Shown:</b>		
	995000653	Operator's Manual (PS803188/PS8C3152)	
	995000654	Quick Reference Guide	
	995000688	Surface Cleaner Operator's Manual (PS803188)	
	995000769	Turbo Nozzle Operator's Manual (PS803188)	

**NOTE A:** OWT Industries, Inc., will not provide engines as replacement parts. Engines are covered through the engine manufacturer's warranty. Consult the accompanying engine manual or contact our service department for assistance.

# POWERSTROKE PRESSURE WASHER – ITEM NO. PS803188 AND PS8C3152

The model number will be found on a label attached to the engine. Always mention the model number in all correspondence regarding your **PRESSURE WASHER** or when ordering replacement parts.



**FIGURE B**

## FIGURE B PARTS LIST

KEY NO.	PART NUMBER	DESCRIPTION	QTY
1	678169004	Thermal Release Valve.....	1
2	308452002	Soap Injector Kit.....	1
3	310924003	Unloader Valve Assembly.....	1
4	308862003	Outlet Tube.....	1
5	940851246	Hose Outlet Label.....	1
6	310993003	Inlet Filter Adapter.....	1
7	642058001	Inlet Filter Connector.....	1
8	308662001	Inlet Filter Screen.....	1

# POWERSTROKE PRESSURE WASHER – ITEM NO. PS803188 AND PS8C3152

The model number will be found on a label attached to the engine. Always mention the model number in all correspondence regarding your **PRESSURE WASHER** or when ordering replacement parts.

## LABELS

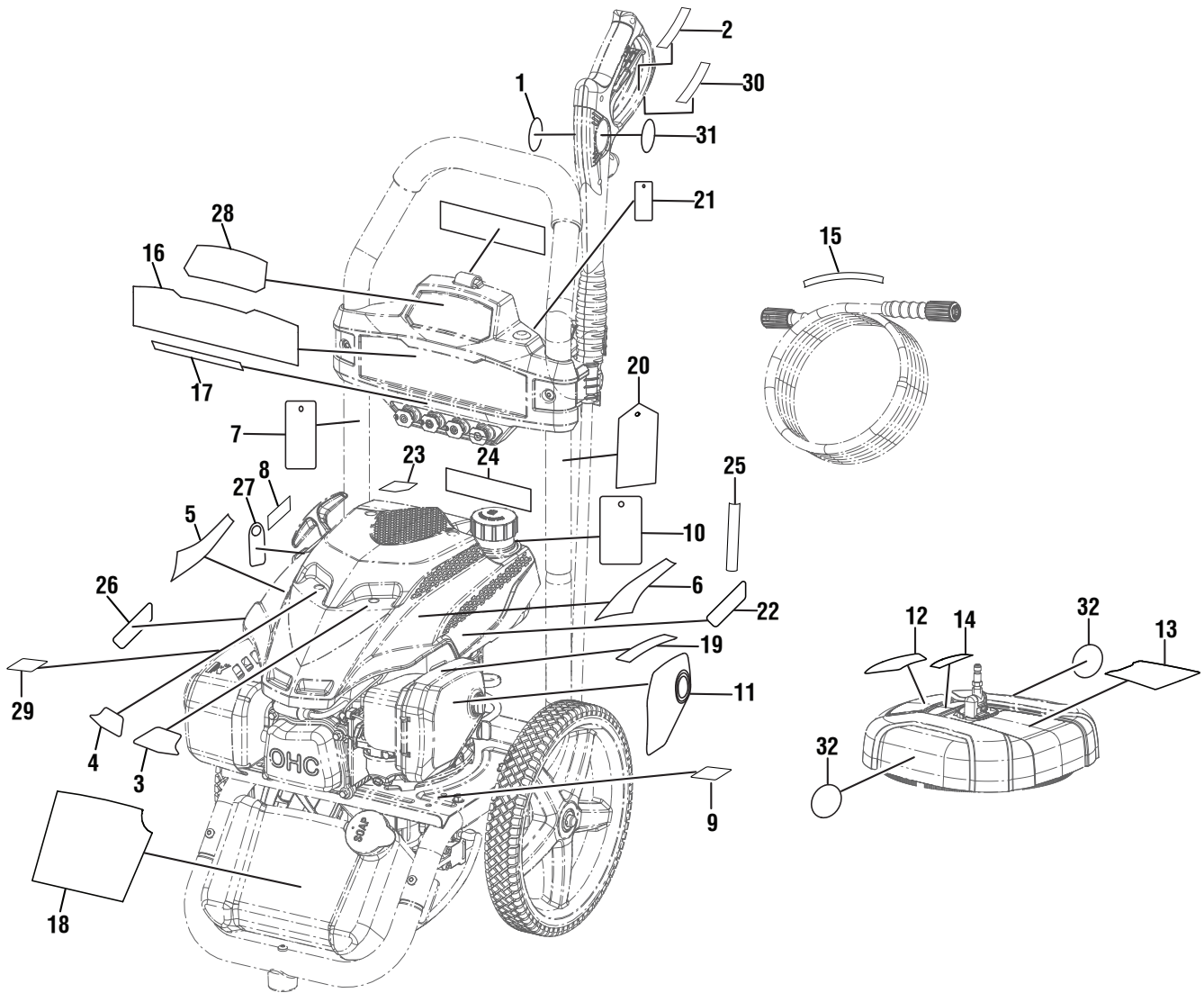


FIGURE C

## POWERSTROKE PRESSURE WASHER – ITEM NO. PS803188 AND PS8C3152

The model number will be found on a label attached to the engine. Always mention the model number in all correspondence regarding your **PRESSURE WASHER** or when ordering replacement parts.

### FIGURE C PARTS LIST

KEY NO.	PART NUMBER	DESCRIPTION	QTY	KEY NO.	PART NUMBER	DESCRIPTION	QTY
1	940786044	Trigger Handle Logo Label .....	1	18	940851456	Detergent Tank Label (PS803188).....	1
2	940654228	Trigger Handle Warning Label .....	1		940851482	Detergent Tank Label (PS8C3152) .....	1
3	941754012	Vent Label (Left).....	1	19	941486002	Inquiries Label (PS803188).....	1
4	941754013	Vent Label (Right) .....	1		941486014	Inquiries Label (PS8C3152) .....	1
5	940851458	Yamaha Label (Right).....	1	20	918016015	Nozzle Hangtag (PS803188) .....	1
6	940851459	Yamaha Label (Left).....	1		918016027	Nozzle Hangtag (PS8C3152).....	1
7	918016012	Notice Hangtag .....	1	21	918016024	Quick Start Hangtag (PS803188) .....	1
8	940871009	Add Oil Label.....	1		918012023	Quick Start Hangtag (PS8C3152).....	1
9	940676043	Data Warnings Label (English).....	1	22	940851461	Choke/Fuel Valve Label (PS803188) ..	1
10	940851256	Fuel Storage Hangtag (PS8C3152) ....	1		940851476	Choke/Fuel Valve Label (PS8C3152)..	1
11	940803288	EMC Label (PS8C3152).....	1	23	941851018	E-85 Label (PS803188).....	1
12	940705437	Surface Cleaner Logo Label (PS803188) .....	1		940851478	E-85 Label (PS8C3152) .....	1
13	941531173	Surface Cleaner Danger Label (PS803188) .....	1	24	940851331	Danger Icon Label (English).....	1
14	940779227	Surface Cleaner Performance Label (PS803188) .....	1		940851477	Danger Icon Label (PS8C3152) .....	1
15	918016005	High Pressure Hose Label (PS803188) .....	1	25	940947021	Combustion Label (PS803188).....	1
	940851259	High Pressure Hose Label (PS8C3152).....	1		940947016	Combustion Label (PS8C3152) .....	1
16	940705436	Logo Label (PS803188) .....	1	26	941851019	Hot Surface Label (PS803188).....	1
	940705442	Logo Label (PS8C3152) .....	1		940851480	Hot Surface Label (PS8C3152) .....	1
17	940851342	Nozzle Callout Label (PS803188) .....	1	27	940889007	Oil Dipstick Hangtag (PS803188).....	1
	940851479	Nozzle Callout Label (PS8C3152) .....	1		940851250	Oil Dipstick Hangtag (PS8C3152) .....	1
				28	940851457	Performance Label (PS803188).....	1
					940851481	Performance Label (PS8C3152).....	1
				29	940676044	Data Warnings Label (PS803188).....	1
					940676045	Data Warnings Label (PS8C3152).....	1
				30	940786047	Trigger Handle Rating Label .....	1
				31	940654084	Trigger Handle Warning Label .....	1
				32	940507002	No Hands/Feet Label (PS803188).....	2

**NOTE A:** OWT Industries, Inc., will not provide engines as replacement parts. Engines are covered through the engine manufacturer's warranty. Consult the accompanying engine manual or contact our service department for assistance.